



BARRIER FREE

YORKVILLE FloWise™ RIGHT HEIGHT™ ELONGATED PRESSURE-ASSISTED 4.2L TOILET

VITREOUS CHINA

YORKVILLE FloWise™ RIGHT HEIGHT™ ELONGATED PRESSURE-ASSISTED 4.2L TOILET

2878 100

- Vitreous china
- High Efficiency, Ultra Low-consumption (0.92 gpf/4.2 Lpf)
- Floor-mounted, back-outlet toilet
- EverClean® surface inhibits the growth of stain- and odor-causing bacteria, mold, and mildew on the surface
- Meets EPA WaterSense™ criteria
- Elongated 16-1/2" (419mm) high bowl rim for accessible applications
- Pressure-assisted siphon jet flush action
- Fully-glazed 2-1/8" (54mm) trapway) ball pass
- Generous 10 x 12" (254x305mm) water surface area
- Close-coupled Flushometer tank*
- Metal chrome trip lever
- Speed Connect™ tank/bowl coupling system
- Sanitary dam on bowl
- 4 bolt caps
- 100% factory flush tested

Separate Component Parts:

- 3703 100** Elongated 16-1/2" (419mm) high bowl with 4 bolt caps
- 4142 100** Flushometer tank complete with coupling components

Nominal Dimensions:

752 x 516 x 780mm

(29-3/4" x 20-1/2" x 30-3/4")

Fixture only, seat and supply by others

Recommended static pressure range

25 psi - 80 psi

Alternate Configurations Available:

- 4142 601** Tank with tank cover locking device
- 4142 801** Tank with right hand trip lever
- 4142 901** Tank complete with right hand trip lever and tank cover locking device

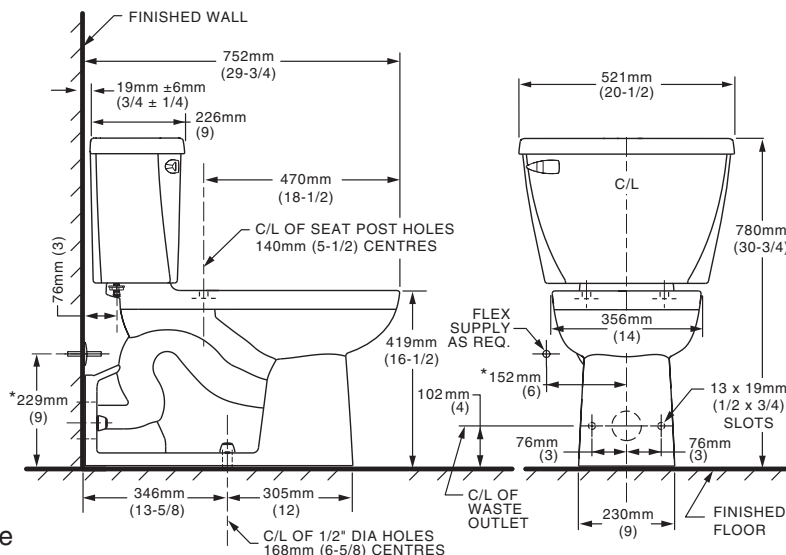
Compliance Certifications -

Meets or Exceeds the Following Specifications:

- ASME A112.19.2-2008 / CSH B45.1-08 for Vitreous China Fixtures

To Be Specified

- Colour: White Bone Silver Linen Black
- Seat: American Standard #5324 019 "Rise and Shine" (with easy to clean lift-off hinge system) solid plastic closed, elongated front seat with cover. See price page.
- Seat: #5321 110 EverClean® Elongated Seat with Slow Close Snap-Off Hinges
- Alternate Seat:
- Supply with stop:



NOTES:

WASTE OUTLET SEAL RING MUST BE NEOPRENE OR GRAPHITE-FELT (WAX RING NOT RECOMMENDED)
SUPPLY NOT INCLUDED WITH FIXTURE AND MUST BE ORDERED SEPARATELY. DISTANCE FROM FLOOR TO CLOSET FLANGE CENTERLINE (ROUGH-IN) MUST BE 4" (102MM) WITH FLANGE SURFACE FLUSH TO 1/16" (1.5MM) MAX. BEYOND FINISHED WALL.
* DIMENSION SHOWN FOR LOCATION OF SUPPLY IS SUGGESTED.
FOR ADDITIONAL INFORMATION REFER TO INSTALLATION INSTRUCTIONS SUPPLIED.
IMPORTANT: Dimensions of fixtures are nominal and may vary within the range of tolerance established by ANSI Standard A112.19.2
These measurements are subject to change or cancellation. No responsibility is assumed for use of superseded or voided pages.



When installed so top of seat is 432 to 483mm (17" to 19") from the finished floor.

MEETS THE AMERICAN DISABILITIES ACT GUIDELINES AND ANSI A117.1 REQUIREMENTS FOR ACCESSIBLE AND USEABLE BUILDING FACILITIES-CHECK LOCAL CODES.

* Flushometer tank system by Flushmate® Div. of Sloan Valve Co.
TOI-214