

ANTIQUITY™ ROUND FRONT 2 PIECE TOILET

2264 017

- Vitreous china
- Low-consumption (6.0 Lpf/1.3 gpf)
- Round front siphon action bowl
- Internal trapway area fully glazed
50mm (2") ballpass
- Close-coupled tank
- Turn-of-the-Century detailing on
tank and bowl
- Side-mounted antique trip lever with
ceramic handle insert
- 2 bolt covers
- 100% factory flush tested
- Sanitary dam on bowl

Separate Component Parts:

- 3093 013** Bowl
- 4094 015** Unlined Tank



2264 500 with Lined Tank

Separate Component Parts:

- 3093 013** Bowl
- 4094 500** Lined Tank

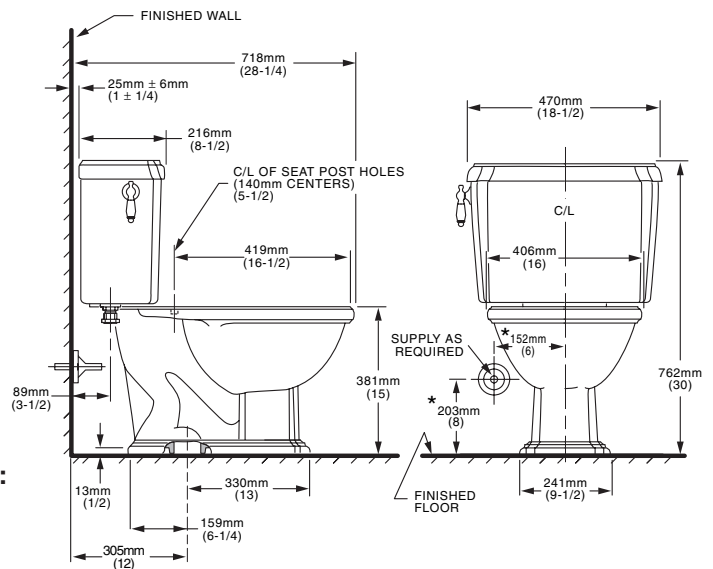
Nominal Dimensions:
718 x 470 x 762mm
(28-1/4" x 18-1/2" x 30")

**Compliance Certifications -
Meets or Exceeds the Following Specifications:**

- ASME A112.19.2M (and 19.6M)
- CAN/CSA B45 series

To Be Specified

- Colour:**
- Seat:** American Standard #5322 011 "Rise and Shine" (with easy to clean lift-off hinge system) solid plastic, closed front, round front seat with cover. See Price Book.
- Supply with stop:**



NOTES:
THIS TOILET IS DESIGNED TO ROUGH-IN AT A MINIMUM DIMENSION OF 305MM (12") FROM FINISHED WALL TO C/L OF OUTLET.
SUPPLY NOT INCLUDED WITH FIXTURE AND MUST BE ORDERED SEPARATELY.
* DIMENSION SHOWN FOR LOCATION OF SUPPLY IS SUGGESTED.
IMPORTANT: Dimensions of fixtures are nominal and may vary within the range of tolerance established by ANSI Standard A112.19.2
These measurements are subject to change or cancellation. No responsibility is assumed for use of superseded or voided pages.